

MULTIMEDIA



VRX766VD
DVD MULTIMEDIA STATION
WITH TOUCH PANEL CONTROL



MAX667VD
2-DIN DVD MULTIMEDIA STATION
WITH TOUCH PANEL CONTROL

DVD PLAYER

VS755
DVD/CD/VCD/
MP3 PLAYER



PROCESSOR

DVH940
DOLBY DIGITAL/
dts CeNET
PROCESSOR



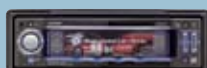
MAIN UNITS



HX-D2
CD RECEIVER/CeNET CONTROL



VXZ766
DVD/CD/VCD/MP3/WMA RECEIVER/
CeNET CONTROL



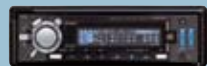
DXZ866MP
CD/MP3/WMA RECEIVER/CeNET
& TOUCH PANEL CONTROL



DXZ766MP
CD/MP3/WMA RECEIVER/
CeNET CONTROL



DXZ666MP
CD/MP3/WMA RECEIVER/
CeNET CONTROL



DXZ466MP
CD/MP3/WMA RECEIVER/
CeNET CONTROL



M455
MARINE CD RECEIVER/
CeNET CONTROL



WXZ466MP
2-DIN 6-DISC CD/MP3/WMA
RECEIVER / CeNET CONTROL



DFZ667MC
2-DIN CD/SD/MP3/WMA
RECEIVER/CeNET CONTROL



CMD4
MARINE CD RECEIVER/CeNET CONTROL

CD CHANGERS

DCZ625
6-DISC CD CeNET
CHANGER



DC625
6-DISC CD C-BUS
CHANGER



iPod INTERFACE

EA1251B
CeNET iPod® INTERFACE

EA1276B
CeNET iPod INTERFACE
for DFZ667MC



TV TUNER



TTX754
CeNET TV TUNER



AX330
CASSETTE RECEIVER/
C-BUS CONTROL



FMC250
FM MODULATOR/ CD STACKER
CONTROLLER



DB566USB
CD/USB/MP3/WMA RECEIVER



DB266MP
CD/MP3 RECEIVER



DB166
CD RECEIVER

iPod

EA1251B
CeNET iPod Interface

EA1276B
CeNET iPod Interface
for DFZ667MC



CCA-670
iPod Connecting Cable
• For VRX766VD and MAX667VD

CCA-673
iPod Video Connecting Cable
• For VRX766VD and MAX667VD

CABLES

CCA-389
Mini 8-pin (DIN) to RCA Transfer Cable

CCA-623
RCA transfer cable for TB851P/TB853W
• 1-ch RCA (L/R/V) input, 1-ch RCA video output



CCA-519
CeNET Branch Cable: 1 m



CCA-520
CeNET Extension Cable: 2.5 m

CCA-521
CeNET Extension Cable: 0.6 m

OPTICAL CABLES

DCA-005
DCA-008



DCA-006

Model No	Terminal Shape		Length
	Out	In	
DCA-005	VRX766VD/ VRX935VD/ VCZ625	DVH940	5 m
DCA-006	DCZ625	DVH940	5 m
DCA-007	VRX766VD/ VRX935VD/ VCZ625	DPH910, DVS9755z	5 m
DCA-008	VRX766VD/ VRX935VD/ VCZ625	DVH940	1.5 m

TV ANTENNAS

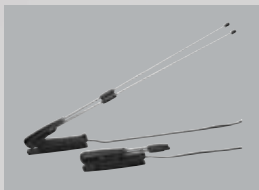
ZCB-303
Window-Type 2-Way Diversity
Antenna
• Cable length: 4 m



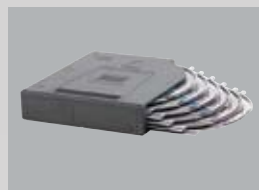
ZCP-404
4-Way Amplified Diversity Inside
Window Film TV Antenna for
TTX754/TB851P



ZCP-100
Whip and Window Type
4-Way Diversity Antenna



ZCA-404
4-Way Diversity Antenna



CAA-397-900
Spare 6-CD Magazine
• For DCZ625, DC625, DCZ625V,
VCZ625

REMOTE CONTROLS

RCB-147-600
Infrared joystick remote control



RCB-177
Remote Control
• For MAX667VD, VRX766VD,
VXZ766



RCB-176
Remote Control



RCB-172
Remote Control



RCB-164
Remote Control

Specifications

Source Units	HX-D2	DXZ866MP	DXZ766MP	DXZ666MP	DB566USB	DXZ466MP	DB266MP	DB166	WXZ466MP	DFZ667MC	ADB341MP
TUNER SECTION											
Frequency bands											
FM: (MHz) 0.05MHz steps	89.0 to 108	87 to 108	87 to 108	87 to 108	87.9 to 107.9	87.5 to 108	87 to 108	87 to 108	87.5 to 108	87 to 108	87.5 to 108
MW: (kHz) 9 kHz steps	531 to 1629	531 to 1629	531 to 1629	531 to 1629	531 to 1602	531 to 1602	531 to 1629	522 to 1629	531 to 1629	531 to 1629	531 to 1629
LW: (kHz) 3 kHz steps				153 to 279	153 to 279	153 to 279	153 to 279	153 to 279	153 to 279		
FM usable sensitivity (dBf)	9	9	9	9	11	-	11	11	9	9	
FM 50 dB quieting sensitivity (dBf)	15	15	15	15	17	-	17	17	15	15	
FM alternate channel selectivity (dBf)	70	70	70	70	70	-	70	70	70	70	
FM stereo separation @1 kHz (dB)	35	32	32	32	35	-	35	35	35	32	
FM stereo freq. resp. @ ±3 dB (Hz)	30 to 15,000	30 to 15,000	30 to 15,000	30 to 15,000	30 to 15,000	-	30 to 15,000	30 to 15,000	30 to 15,000	30 to 15,000	
CD SECTION											
Wow/Flutter (WRMS)	Below measurable limits	Below measurable limits	Below measurable limits	Below measurable limits	Below measurable limits	Below measurable limits	Below measurable limits	Below measurable limits	Below measurable limits	Below measurable limits	Below measurable limits
S/N ratio (dB)	112	100	100	100	100	100	100	100	90	100	100
Frequency response (Hz)	5 to 20,000	5 to 20,000	5 to 20,000 Hz	5 to 20,000 Hz	10 to 20,000 Hz	10 to 20,000 Hz	10 to 20,000	10 to 20,000	10 to 20,000	5 to 20,000	10 to 20,000
Dynamic range (dB)	100	96	95	95	93	93	93	93	90	95	95
Harmonic distortion (%)	0.003	0.01	0.01	0.01	0.03	0.03	0.03	0.03	0.01	0.01	0.01
AUDIO SECTION											
Power output (DIN45324, +B = 14.4 V)		4 × 31 W	4 × 27 W	4 × 25 W	4 × 25 W	4 × 25 W	4 × 20 W	4 × 20 W	4 × 27 W	4 × 50 W	4 × 50 W
GENERAL											
Dimensions (W × H × D), mm	178 × 50 × 178	178 × 50 × 160	178 × 50 × 158	178 × 50 × 158	178 × 50 × 155	178 × 50 × 155	178 × 50 × 155	178 × 50 × 155	178 × 100 × 160	178 × 100 × 156.5	178 × 100 × 156.5
Remote control (W × H × D), mm	52 × 125 × 12	44 × 113 × 13	44 × 113 × 13	44 × 113 × 13	44 × 113 × 13	44 × 113 × 13	44 × 113 × 13	-	44 × 113 × 13	44 × 113 × 13	
Weight (kg)	1.7	1.7	1.6	1.6	1.3	1.3	1.2	1.2	2.2	2.2	2.1
Power consumption: less than	1.4 A	15 A	15 A	15 A	15 A	15 A	15 A	15A	15 A	15 A	
Speaker impedance	4Ω (4Ω to 8Ω allowable)	4Ω (4Ω to 8Ω allowable)	4Ω (4Ω to 8Ω allowable)	4Ω (4Ω to 8Ω allowable)	4Ω (4Ω to 8Ω allowable)	4Ω (4Ω to 8Ω allowable)	4Ω (4Ω to 8Ω allowable)	4Ω (4Ω to 8Ω allowable)	4Ω (4Ω to 8Ω allowable)	4Ω (4Ω to 8Ω allowable)	

Amplifiers	DPX11500	DPX1800	DPX2250	APX4360	APX2180	APX4240	APX2120	APX1300
Number of Channels	1	1	2/1	4/3/2	2/1	4/3/2	2/1	1
Maximum Power Output	1500w	800w	400w	640w	320w	400w	200w	400w
MOS-FET Power Supply	•	•	•	•	•	•	•	•
4-Ohm, 20Hz-20kHz	800w X 1	450w X 1	125w X 2	90w X 4	90w X 2	60w X 4	60w X 2	300w X 1
2-Ohm, 20Hz-20kHz	1500w X 1	800w X 1	200w X 2	150w X 4	150w X 2	90w X 4	90w X 2	400w X 1
Bridged, 20Hz-20kHz			400w X 1	300w X 2	300w X 1			
2-Ohm Stable	•	•	•	•	•	•	•	•
2-Ohm Mono Stable	•	•						
Variable Bass Boost Control	•	•						
Gold Plated Connections	•	•	•	•	•	•	•	•
Speaker Level Input	•	•	•	•	•	•	•	•
Dimensions (W" X L" X H")	21 1/4 X 12 X 2 7/8	19 1/4 X 12 X 2 7/8	13 1/4 X 12 X 2 7/8	16 X 12 X 2 7/8	12 X 12 X 2 7/8	13 X 10 7/8 X 2 3/4	10 5/8 X 10 7/8 X 2 3/4	13 X 10 7/8 X 2 3/4

Subwoofers	PXW1552	PXW1252	PXW1251	PFW1051	SRW1245	SRW1045	SB15XB	SB12X
Max Power Handling	1500w	1000w	1000w	600w	750w	650w	600w	600w
Continuous Power Handling	750w	500w	500w	300w	375w	325w	300w	300w
Frequency Response	20Hz-1.5kHz	20Hz-1.5kHz	20Hz-1.5kHz	20Hz-1.5kHz	30Hz-500Hz	32Hz-500Hz	32Hz-500Hz	32Hz-500Hz
Efficiency	90dB	87dB	87dB	84dB	82dB	81dB	82dB	81dB
Basket Type	Die Cast Aluminum	Die Cast Aluminum	Die Cast Aluminum	Die Cast Aluminum	Stamped Steel	Stamped Steel	Stamped Steel	Stamped Steel
# of Voice Coils	2	2	2	1	1	1	1	1
Impedance	4 Ohm	4 Ohm	2 Ohm	4 Ohm	4 Ohm	4 Ohm	4 Ohm	4 Ohm
Outside Dimension	15 3/8"	12 3/8"	12 3/8"	10 3/8"	12 3/8"	10 3/8"	15 1/4"	12 "
Cut Out Size	14"	10 7/8"	10 7/8"	9 1/16"	11 3/4"	9 3/4"	14"	11 3/4"
Mounting Depth	7"	6 3/8"	6 3/8"	3"	6 1/4"	5 3/4"	6 1/4"	5 1/2"
Enclosure Size	1.5 Cu Ft	0.85 Cu Ft	0.85 Cu Ft	0.5 Cu Ft	1.05 Cu Ft	0.88 Cu Ft	1.5 Cu Ft	1.05 Cu Ft

TV	TB851P
Screen size (W × H), mm	8-inch
Drive principle	TFT (Thin Transistor) active matrix display
Number of pixels	336,960 (234 × 1440)
VRC video input	1.0 ± 0.2 Vp-p (input impedance 75Ω)
Dimensions (W × H × D), mm	178 × 50 × 188
Weight (kg)	2.2
Power Consumption	2.0 A
Power Requirement	14.4 VDC (10.8 ~ 15.6 V)

MARINE AUDIO COMPONENTS

Marine Source Units	CMD4	M455
CeNET	•	•
Flip Down Faceplate	•	
Watertight Faceplate	•	
Detachable DCP		•
Z-Enhancer		•
Power Rating	53w X 4	52w X 4
# of RCA Outputs	6	4
RCA Output Voltage	2V	2V
Auxiliary Input(s)	1 Audio	1 Audio
Wire Remote Capable	•	•

Marine Subwoofers	CMSW10.1	CMSW10.1S
Max Power Handling	350w	350w
Continuous Power Handling	100w	100w
Frequency Response	60Hz-2.5kHz	60Hz-2.5kHz
Efficiency	88dB	88dB
# of Voice Coils	1	1
Impedance	4 Ohm	4 Ohm
Outside Dimension		
Cut Out Size	9 1/16"	9 1/16"
Mounting Depth	4 1/4"	4 1/4"
Enclosure Size	Freeair	Freeair

MP3/WMA Feature

				WMA	MP3
FILE SYSTEM	ISO9660	LEVEL1		●	●
		LEVEL2		●	●
		LEVEL3		(#1)	(#1)
	ISO9660 EXTENSION	JOLIET	PLAY	●	●
			FILE NAME	64-byte	128-byte
	OTHERS	ROMEO	PLAY	●	●
			FILE NAME	64-byte	128-byte
FILE DESCRIPTOR	.mp3 / .MP3				●
	.Mp3 / .Mp3				●
	.WMA			●	
	.rmp				●
MPEG FORMAT	MPEG1				●
	MPEG2				●
	MPEG2.5				●
SAMPLING FREQUENCY	MPEG1				
	MPEG2				
	MPEG2.5				
BIT RATE	WMA			Fs=22.05 - 44.1kHz	
	MPEG1				
	MPEG2				
	MPEG2.5				
OTHERS	WMA			48,64,80,96,128,160, 192kbps	
	DIRECTORY DEPTH			'MAX 8	'MAX 8
	FILE NAME NUMBER			64-byte	128-byte
	TOTAL FILE NUMBER			'512	'512
	TOTAL FOLDER NUMBER			'255	'255
	ID3 TAG	ver.1.x			(#2)
		ver.2.x			(#3)
		TITLE		●	●
		ARTIST		●	●
		ALBUM		●	●
	WMA-TAG	TITLE		●	
		ARTIST		●	
		ALBUM #		(#4)	
	VBR			●	●



(#1) Items finalized by ISO9660 can be played back. However, they require verification with Applix Packetman, Adaptec DirectCD, or B'ZCLIP software.

(#2) 30 characters.

(#3) The number of letters in one sentence is ver 1.1 level. Anything over this will be cut. Ver2 supports 60 bytes worth of characters. Unicode recordings support 30 characters.

(#4) WMA-TAG recorded by Winamp2 are supported.

Multimedia Stations

	VRX766VD	MAX667VD
MONITOR SECTION		
Screen size (W × H), mm	154.0 × 87.0 (7-inch)	156.2 × 82.3 (7-inch)
Display type	Transparent-type TN liquid crystal display	Transparent-type TN liquid crystal display
Drive principle	TFT (Thin Transistor) active matrix display	TFT (Thin Transistor) active matrix display
Number of pixels	336,960	336,960
VRC Video input	1.0 ±0.2 Vp-p (input impedance 75 Ω)	1.0 ±0.2 Vp-p (input impedance 75 Ω)
VRC Audio input	130 ±60 mVrms (input impedance 10 kΩ or more)	130 ±60 mVrms (input impedance 10 kΩ or more)
TUNER SECTION		
Frequency bands		
FM: (MHz) 0.05 MHz steps	87 to 108	87 to 108
AM: (kHz) 9 kHz steps	531 to 1629	531 to 1629
FM usable sensitivity (dBf)	9	9
FM 50 dB quieting sensitivity (dBf)	15	15
FM Alternate channel selectivity (dBf)	70	70
FM stereo separation @ 1 kHz (dB)	32	32
FM Stereo freq. resp. @ ± 3 dB (Hz)	30 to 15,000	30 to 15,000
DVD SECTION		
Usable discs	DVD video disc	DVD video disc
Frequency response (Hz)	20 to 20,000 (48 kHz) (+1 dB/-1 dB)	20 to 20,000 (48 kHz) (+1 dB/-1 dB)
Distortion	0.01	0.006
CD SECTION		
Wow/Flutter (WRMS)	Below measurable limits	Below measurable limits
S/N ratio (dB) 1 kHz	100	100
Frequency response (Hz)	20 to 20,000 (+1 dB/-1 dB)	20 to 20,000 (+1 dB/-1 dB)
Dynamic range (dB) 1 kHz	100	100
Harmonic distortion (%)	0.006	0.006
AUDIO SECTION		
Maximum power output	4 × 50 W	4 × 50 W
GENERAL		
Dimensions (W × H × D), mm	178 × 50 × 165	178 × 100 × 160
Hide-away unit (W × H × D), mm	178 × 37.5 × 209	—
Weight (kg)	2.3	2.6
Power consumption	4.0 A (at 1 W)	4.0 A (at 1 W)
Power requirement	14.4 V DC (10.8 ~ 15.6 V)	14.4 V DC (10.8 ~ 15.6 V)
Speaker impedance	4Ω (4Ω to 8Ω allowable)	4Ω (4Ω to 8Ω allowable)

5.1-channel processor

	DVH940
Signal to noise ratio	95dB
Distortion	0.01%
Separation	80dB
Input sensitivity	0.6V, 1.2V, 2V
Subwoofer cutoff frequency	50Hz, 80Hz, 120Hz
Subwoofer level control	SP-GAIN +/- 10Db
Output voltage	4V
Input impedance	47K ohm
Output impedance	300 ohm
Parametric EQ bands	Bands × 3 (Front/Centre/Rear)
Q	1-20 (5 points)
EQ centre frequency range	20, 25, 31.5, 40, 50, 63, 80, 100, 125, 160, 200, 250, 315, 400, 500, 630, 800, 1k, 1.25k, 1.6k, 2k, 2.5k, 3.15k, 4k, 5k, 6.3k, 8k, 10k, 12.5k, 16k, 20k
Parametric EQ Boost/Cut	12dB +/-
Time correction range	0-5ms (Centre) 0-5ms (Rear)
Frequency response	20Hz-44kHz

Notes

- Specifications and design are subject to change without notice.
- Photos are non-binding. The manufacturer and importer do not take responsibility for any printing errors.
- Dolby, Dolby Surround, Pro Logic and the double-D symbol are trademarks of Dolby Laboratories.
- dts is a trademark of Digital Theater Systems, Inc.
- All other trademarks are the property of their respective owners.
- All units in this catalogue are primarily intended for installation in passenger cars.
- Use in lorries, tractors, off-road vehicles, construction machinery, boats, and other special-purpose vehicles or on motorcycles is not recommended.
- There is no guarantee that all units in this catalogue can play CCCD (Copy Control CD), Hybrid SACD (Super Audio CD), CD-R/RW and DVD ±R/RW
- LCD panels use the latest high-tech components and boast an effective pixel rate of 99.99%. However, be aware that 0.01% or less of the pixels may be defective.

FEATURE ICONS

Multimedia/Main Unit



2-Zone entertainment

Function that allows people in the front and back seats to enjoy separate visual or audio entertainment sources.



24-bit D/A converter

This sophisticated Digital-to-Analogue converter converts the 16-bit digital data on compact discs to a full 24-bit format for the utmost in resolution and clarity. It combines the qualities of the 1-bit D/A converter with wider dynamics and extremely low noise opening up a whole new world of three-dimensional sound rich in musical nuances and instrumental harmonics.



5.1-channel Dolby Digital / dts surround

With the arrival of DVD, 5.1-channel surround sound, which is already a must for home theatre systems, is rapidly becoming the entertainment format of choice in motor vehicles. Dolby Digital and dts provide three channels of front sound (left, right, centre) together with two rear audio channels (left, right) and a dedicated low-frequency channel for a subwoofer. This combination, as satisfied home theatre enthusiasts well know, is able to reproduce the dynamic sound field of a cinema in a relatively small space. So take the show on the road; let Clarion bring full 5.1-channel performance into your car.



5.1-channel surround system

Built-in 5.1-channel surround system: Dolby Pro Logic / Dolby Digital AC3 / dts decoder.



6-disc CD changer

The built-in 6-disc CD changer lets you enjoy your favourite music for long periods of time without the need for switching CDs. So now on long drives, you can listen to your favourite music albums to your heart's content.



Optimedia display

Advanced human-machine interface that fuses high quality graphics and interactive touch-screen operation in an eye-catching design.



AC Processor IV

DSP newly developed by Clarion's acoustic technology know-how. In order to optimise the sound quality and field balance, it incorporates various functions such as ADF, VSE, Dolby Pro Logic II, 3-way Digital Crossover, Parametric EQ and Time Alignment, being processed by a single chip.



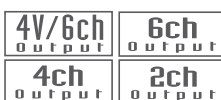
Amplifier canceller

When you use an external amplifier, the power supply to built-in amplifier can be switched off in order to avoid spurious radiation signal being mixed and ensures the output of fine quality.



Anti Distortion filter

Eliminates phase distortion in high and low frequencies and emphasizes the natural frequency characteristics of the sound, for natural flat response and clear details.



Audio output

RCA output terminals for connecting with external amplifiers. With external amplifiers, you can build up a system with more powerful output and higher sound quality. Especially 4V output can drive amplifiers powerfully and helps to get pure sound.



Auto dimmer

It is linked to headlight switch and protects from glare during the night time by adjusting brightness of the front-face illumination. Some high-end models come with built-in sensor so that the brightness is automatically adjusted in accordance with darkness of vehicle interior.



AUX input

External sound input in RCA format. It can be connected with equipments such as a video game or portable player and enables sound output allows control of from your car audio system.



CD

This symbol shows compatibility with compact discs.



CD text

When a CD text compatible CD is played, text information such as artist name or music title is shown on the display.



CaNET

Original bus system developed by Clarion, which enables high-speed data transfer and high quality sound transmission. Your system can be upgraded with optional devices such as CD changer, TV tuner, DAB tuner, DSP, iPod interface and so on.



Digital optical output / input

Building of a 5.1-channel surround system that draws a definite sound figure in the car inside and to give should be made possible.



Digital Z-Enhancer

3 equalising patterns can be selected from the DSP to boost either the bass or the treble separately, or both together. Also, 3 additional gain adjustment patterns provide a total of 9 equalising patterns that you can change to suit your favourite music.



Dolby Pro Logic

It is a name of the decoder for separating and restoring 2-channel stereo signal recorded in the Dolby surround format to the 4 original channel signals.



Dolby Pro Logic II

One of the latest sound technologies brought by Dolby Laboratory, which enables to create virtual 5.1-channel sound from conventional 2-channel source. Thanks to the newly developed algorithm, the system simulates full surround sound so that you can make full use of your 5.1-channel system anytime. It features phantom mode for a system without centre speaker.



DVD video

The unit is compatible with the DVD video format so you can watch DVD software in your car.

Subwoofer/Speaker



Air compression

The exhaust back pressure is once compressed in the cabinet for boosting bass sound.



Aluminum-coated Polypropylene cone

High-rigidity, lightweight polypropylene is used for a cone material.



Bass extender

It is a heavy low-pitched sound reinforcement circuit whose frequency compensation according to a system is attained.



Counter drive

By the ingenuity of mount design, large calibre 17 cm woofer fits inside a slim and compact body.



Digital ready

Featuring higher power handling, Clarion's Digital Ready speakers reproduce the wide dynamic range of Compact Discs and other digital media.



Dual 4-ohm voice coil

Dual voice coils deliver perfect playback of large-amplitude bass. These coils also provide high sensitivity and excellent performance for large input sounds.



Neodymium magnet

Neodymium magnet has a feature of high magnetic energy, which helps to minimise magnetic distortion when it is used for speaker driver.



Full OFC wire

99.995% pure oxygen free copper is used for wiring in order to secure pure sound.



Glass fibre cone

Glass fibre is adopted as a cone material, which enables quick response on sound reproduction.



HX series

HX series comes from Clarion's perpetual quest for the perfection. Their highly qualified sound will elevate you to the new height of sound emotion.



In-line network

Separate network is not required for the installation.



In-phase coaxial

These speakers have been uniquely designed to accommodate a tweeter and woofer on the same axis, which as a result conveys, crisp treble and vibrant bass to the listener's ears simultaneously.



Flip down console

Clarion has designed the CD insertion slot to sit behind the front panel in order to leave sufficient space for a large, easy-to-read display. Depending on the model, the front panel slides down at the press of a button or can be released and folded down mechanically.



Front AUX input

What could be easier? The front jack lets users easily connect line outputs from portable audio players or other devices into their Clarion systems for high-quality sound.



Low-pass and high-pass filters

A filter that passes signals below a crossover frequency (LPF) or above a crossover frequency (HPF). It works to optimise the signal for high or low frequency reproduction when subwoofer or tweeter is connected to the system.



LPO (Listening Position Optimiser)

The WXZ466MP's Listening Position Optimiser uses digital processing to virtually adjust the speaker distance, enabling sound stage settings to accommodate a wide variety of different types of vehicles. So no matter what type of car you drive, you can count on Clarion to drive your sound with high precision and realistic presence.



Magna bass EX

This bass enhancer is designed to boost ultra low frequency around 60 Hz while conventional loudness works for 100 Hz. The effect is controlled according to the volume level.



Message information

The user can program own message up to 30 characters that will be shown on the display when the unit is turned on and off.



MOS-FET

MOS-FET (Metal Oxide Semiconductor Field Effect Transistor), well known as superior electronic transistor for audio system, is used in the final stage of amplifier. Since MOS-FET is a highly efficient element with a linear operation curve, it dramatically improves S/N of the high frequency range, which is especially susceptible to noise. This results in smooth and rich expressive capabilities, and sound reproduction infinitely close to the original source.



Music catcher

On board memory chip can capture your favourite music when you play CD. Once the music is copied to the memory, you just need to press a button to play it.



Parametric EQ

Equalising frequency is variable so that you can customise the sound character more precisely according to your speaker system.



SD memory card slot

This enables users to play MP3/WMA files from their SD memory cards through the system.



Slope console

The face panel of the slope console slides down gracefully to reveal the CD loading slot. The smooth operation of the console presents a serenely elegant driving scene.



Time alignment control

Lets you easily adjust the time delay among the speakers to best suit your interior simply by choosing the type of your car (sedan, mini-van, etc.)



Touch panel control

Based on pure HMI, provides an intuitive and easy-to-use alternative to conventional buttons and knobs. Convenient one-touch menus make easy to operate complex multimedia functions, as well as control of all your system components. Call up programs, select stations, input titles or control audio and video output — all with just the touch of a finger.



USB memory slot

Equipped with a USB port to offer playback of WMA/MP3 files stored on a connected USB memory card or USB-compatible player.



VCD

This symbol shows compatibility with VCD.



Variable colour display

This LCD display lets you mix RGB (Red/Green/Blue) level to create the background colour. The control buttons on the faceplate automatically change colours to match the display.



Z-Enhancer

Three types of sound quality patterns are pre-set for easy selection. Boost the bass only, the treble only, or both, with the level of boost adjustable by the user.



WMA/MP3

With decoders for both MP3 and WMA (Windows Media Audio), you can play either type of ripped or downloaded audio files. Also supports ID3 tags for display of meta file information. With digital compression, these formats enable up to 12 hours of music to be condensed onto a single CD-R/RW while delivering CD-level quality.



Z-Enhancer Plus

Same functions as standard Z-Enhancer, but in addition, all units with "Z-Enhancer Plus" are designed for 2-band parametric equalisation.



Metallised MIPP cone

Metallised MIPP cone provides superior rigidity while maintaining lightness for high dynamic response.



Mica polypropylene mixed injection cone

Polypropylene with mica particles blended in is used for injection-molded diaphragms to attain superior response.



PEI balanced drive

Integrated PEI diaphragm and voice coil bobbin, which reduces the mass and gives the optimum induction conditions in the magnetic gap. It results a dramatic improvement in dynamic range.



Powerful strontium magnet

A high-conductivity magnet is used in Clarion's speaker systems to obtain an air gap magnetic flux density significantly higher than that obtained from ferrite magnets.



Rear-vented pole piece

To prevent pressure from building up inside the centre cap and causing increased amplitude distortion, a vent is provided on the rear of the pole piece.



Rubber surrounds

The rolled edge of the diaphragm provides superior response, while its butyl material is highly durable and moisture resistant.



Silk-cloth soft dome tweeter

Clarion's high-end tweeters use silk, strengthened by the lamination layer, provides natural, finely detailed sound.



TM MIPP (Titanium Metallised MIPP) Cone

MIPP (Mica Injected Polypropylene) cones with blended titanium offer superior lightness and ridity excellent response even to the fast transients of digital sources.



Variable angle tweeter

The angle of tweeter is adjustable according to the position of installation.



Wide-range 80 kHz / 120 kHz silk dome tweeter

Uses soft silk dome diaphragms and high-power magnets to achieve rich expressiveness. Offers up to 80 kHz or 120 kHz maximum reproduction for crystalline highs.



Wired remote control

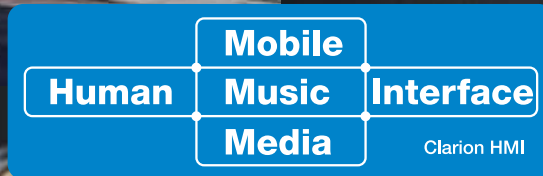
Stick-type remote for control of powered subwoofer from the driver's seat, and when set on the dashboard, puts control of low-pass filter, gain control and phase switching comfortably within reach.



Water resistant cone

Water resistant cones prevent sound quality deterioration caused by moisture. Door mounting is possible without further protection.

clarion



DVD MULTIMEDIA STATION
WITH TOUCH PANEL CONTROL

VRX766VD



iPod control with touch panel

Take your tunes on the road with Clarion. Answering the call of iPod fans, iPod control is offered by Clarion in 2006. We allow you to "Podify" your in-car experience with a new, easy-to-use source-unit interface. Compatible with all third-generation and newer iPods. The interface makes accessing your iTunes collection as easy as the touch of the screen to fast-forward or reverse track CD's.



True 2-Zone Entertainment

Clarion's 2-Zone entertainment feature offers SUV and mini van owners more flexibility when it comes to their mobile entertainment system. Now, owners of Clarion's VRX766VD get more front-seat listening options while rear-seat passengers watch and listen to a DVD or VHS movie via wireless headphones. So, plug in an iPod, listen to a CD, the or any CeNET-equipped audio source. This is versatility where you need it most in the car.



Now iPod Video Ready



Clarion H.M.I.

Human Mobile Music Media Interface

Music, information, and mobility.

Clarion seeks the ideal connection of these elements.

Clarion fulfils your dream for the ideal connection to mobile multimedia while on the road.

Connecting your music and information to the mobile environment in a user-friendly way enhances your comfort and enjoyment for complete satisfaction.

Let Clarion be the interface that creates the connection.

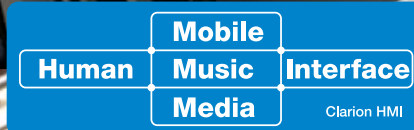
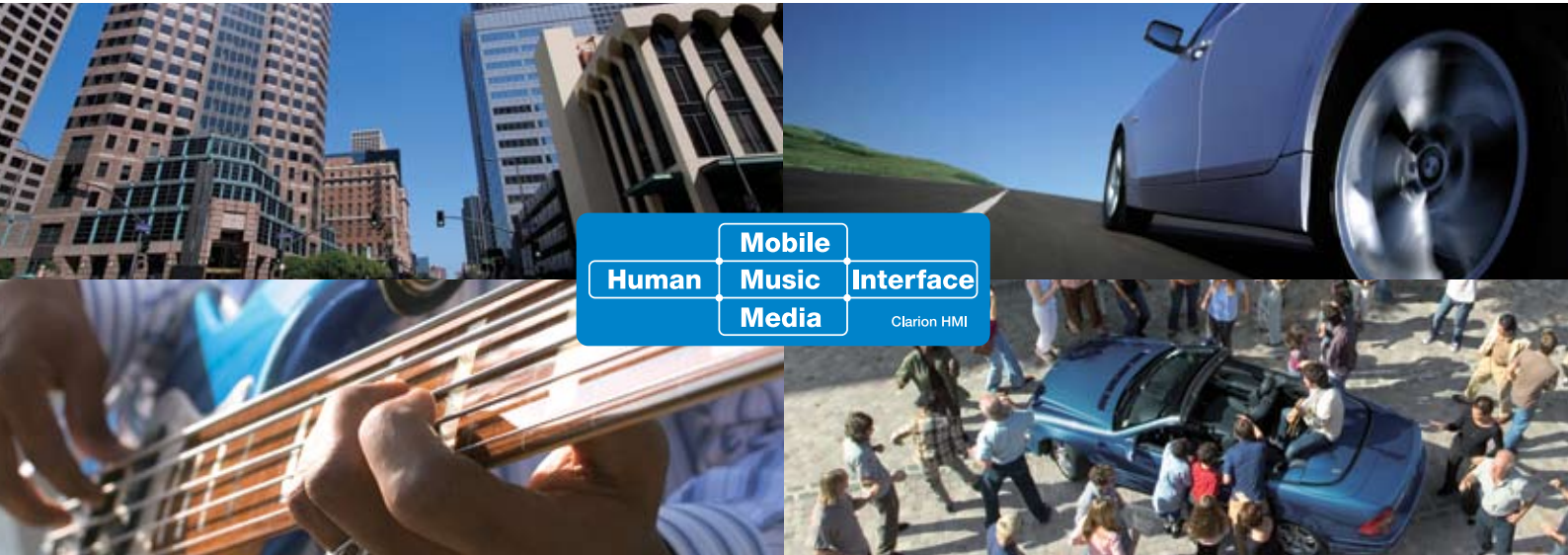
Our range of products not only entertain you with high quality video and audio, but literally interact with you while on the road.

And no matter how many times you have travelled down the same roads, you will be vividly reborn in the fascinating, magic-blue world of Clarion Azzurro.

Clarion Australia Pty. Ltd. <http://www.clarion.com.au>

30 Corporate Drive, Moorabbin, Victoria 3189, Australia
Tel: (61) 3-8558-1115, Fax: (61) 3-9551-0366

clarion



Clarion. Suits all flash drivers

Are you in the drivers seat when it comes to the coolest and handiest toys and technology? If so, USB Flash Drivers will have caught your eye, giving you compact and easy-to-use portable storage of all your top tunes.

Now, the latest eye-opener in Clarion mobile entertainment is just for you. The new Clarion DB566USB head unit is not only a heavyweight on features, power and style, with a AM/FM stereo tuner and CD-MP3/WMA player, but it also includes a USB port on the front panel. It supports all types of USB media adaptors.

Just plug in and play... and all your favorite tunes can become driving tunes, quick as a flash.

Sound it out at www.clarion.com.au

USB

DB566USB

Clarion | Clarion Australia Pty. Ltd.

30 Corporate Drive, Moorabbin, Vic, 3189 Phone: 038558 1115 Fax: 039551 0366

Join the Clarion HMI -Human [Mobile Music Media] Interface- : www.clarion.com.au